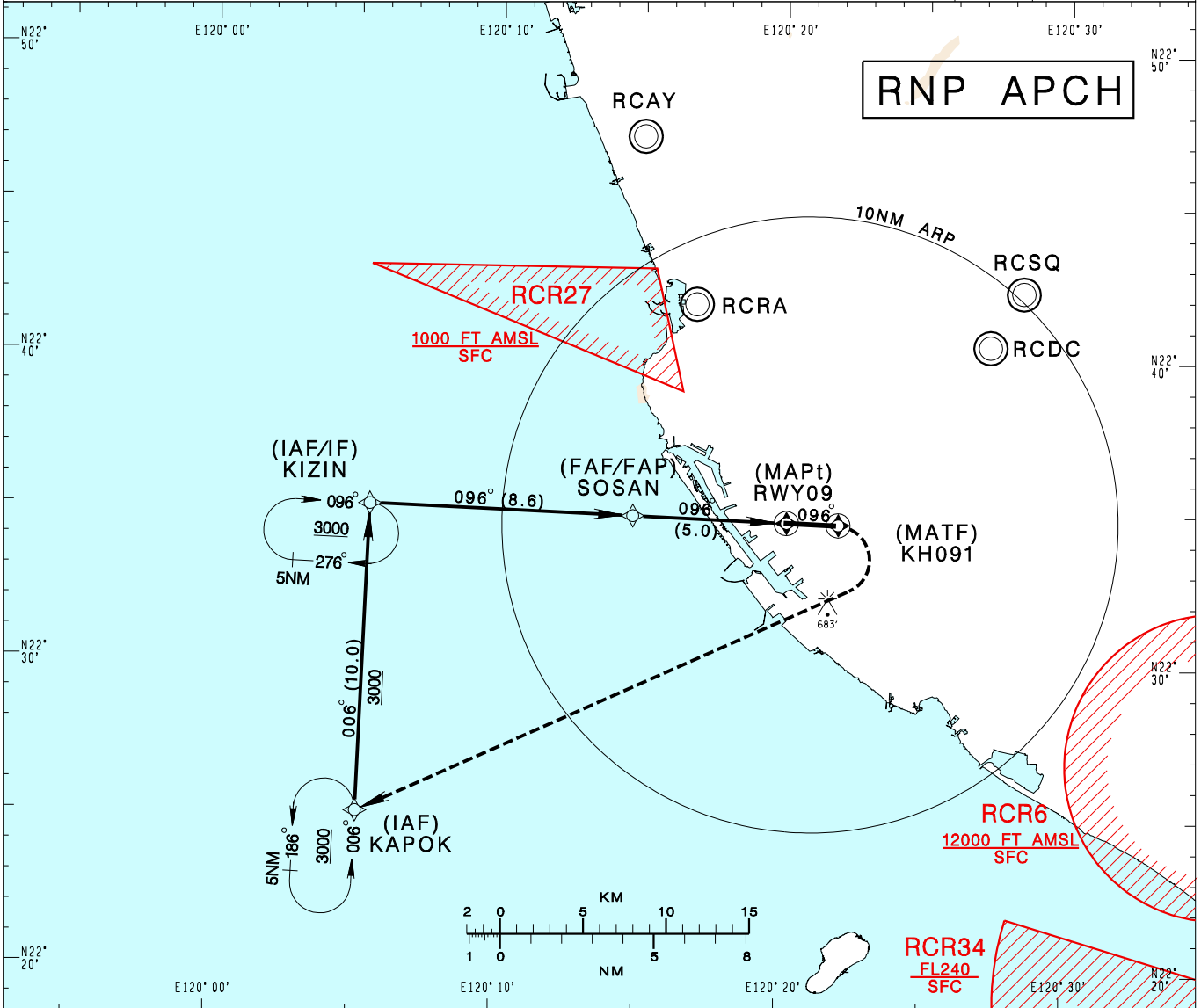


# 高雄國際機場

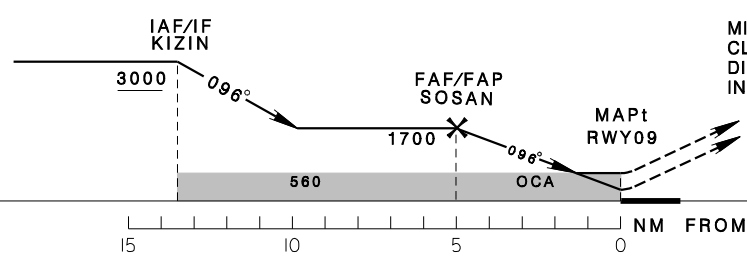
## KAOHSIUNG INTL AD

RCKH  
RNP RWY09

KAOHSIUNG APP 124.7 125.7	KAOHSIUNG TWR 118.7 120.7	ATIS 127.8			
Apt Elev: 32'		Rwy09 DTHR Elev: 21'		Trans Level: FL130	Trans Alt: 11,000'
BEARINGS ARE MAGNETIC; DISTANCES ARE NAUTICAL MILES; ELEVATIONS, HEIGHTS IN FEET					



5NM	4NM	3NM	2NM	DIST to DTHR
1700	1380	1050	730	ADVISORY ALT



MISSED APCH:  
CLIMB TO KH091, THEN TURN RIGHT  
DIRECT TO KAPOK, MAX 240KT IAS  
IN TURN. CLIMB TO 3000 AND HOLD.

VPA 3.07°  
RDH 50 at displaced THR  
223438.97N 1202011.10E

MINIMA (OCA IN FT, VIS IN M, OCH IN FT)		A	B	C	D
LNAV /VNAV	STRAIGHT IN		553/1700	532	
	STRAIGHT IN (ALS OUT)		553/2400	532	
LNAV	STRAIGHT IN		560/1700	539	
	STRAIGHT IN (ALS OUT)		560/2400	539	

NOTE  
1. CIRCLING NOT AUTHORIZED.  
2. BARO-VNAV NOT AUTHORIZED BELOW 0° C.  
3. DME/DME NOT AUTHORIZED.  
4. ATS SURVEILLANCE REQUIRED.

CHANGES: NEW PAGE NUMBER, UPDATE RESTRICTED AREA VERTICAL LIMITS REPRESENTATION